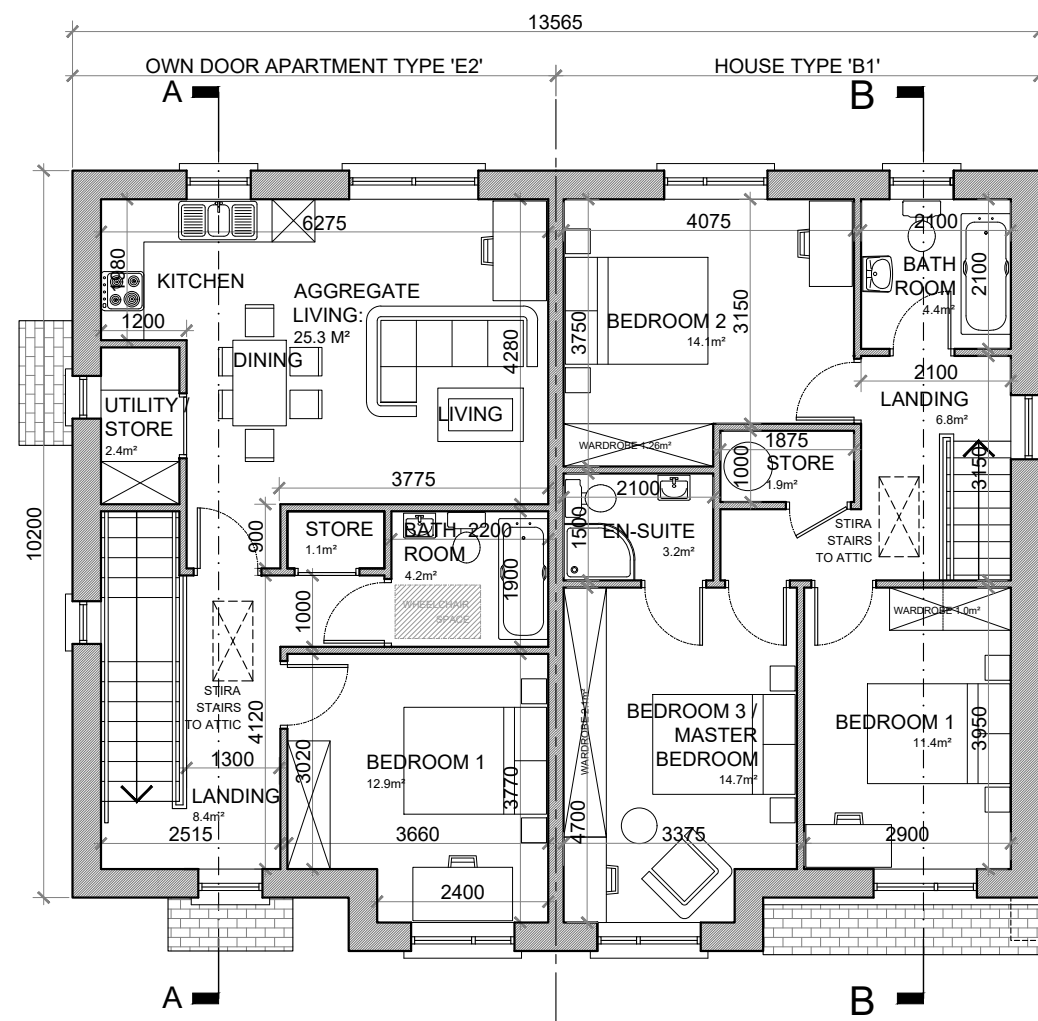


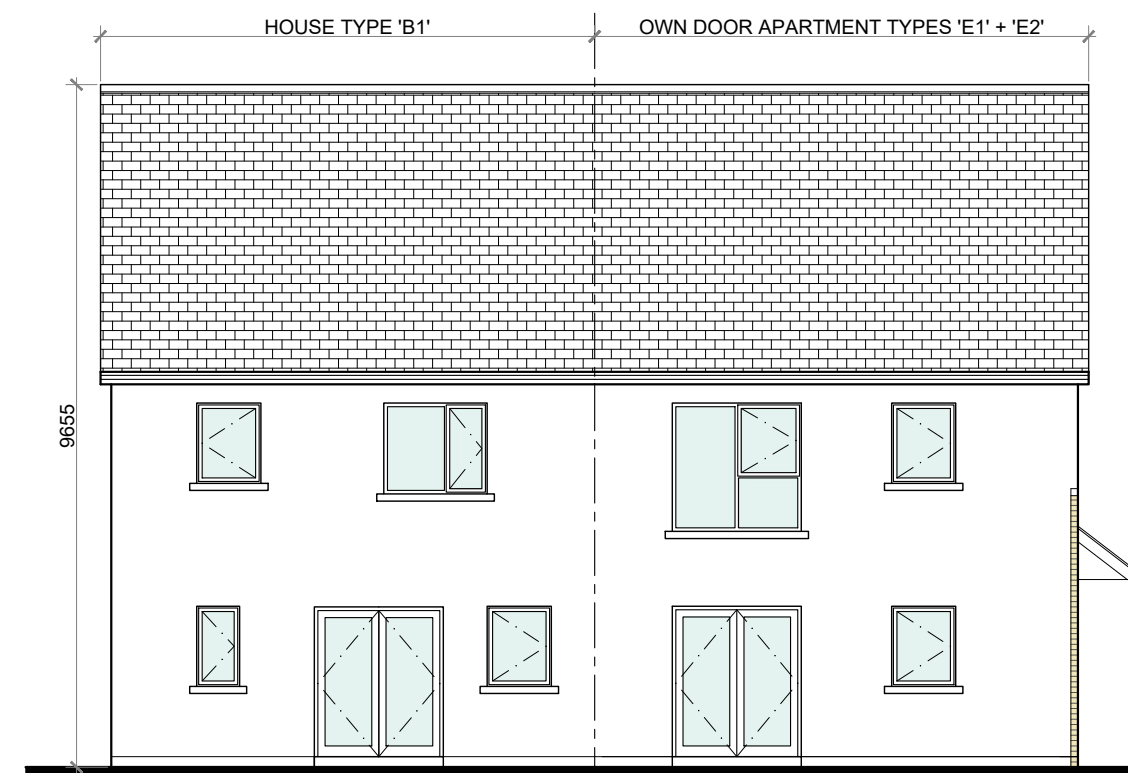
A1



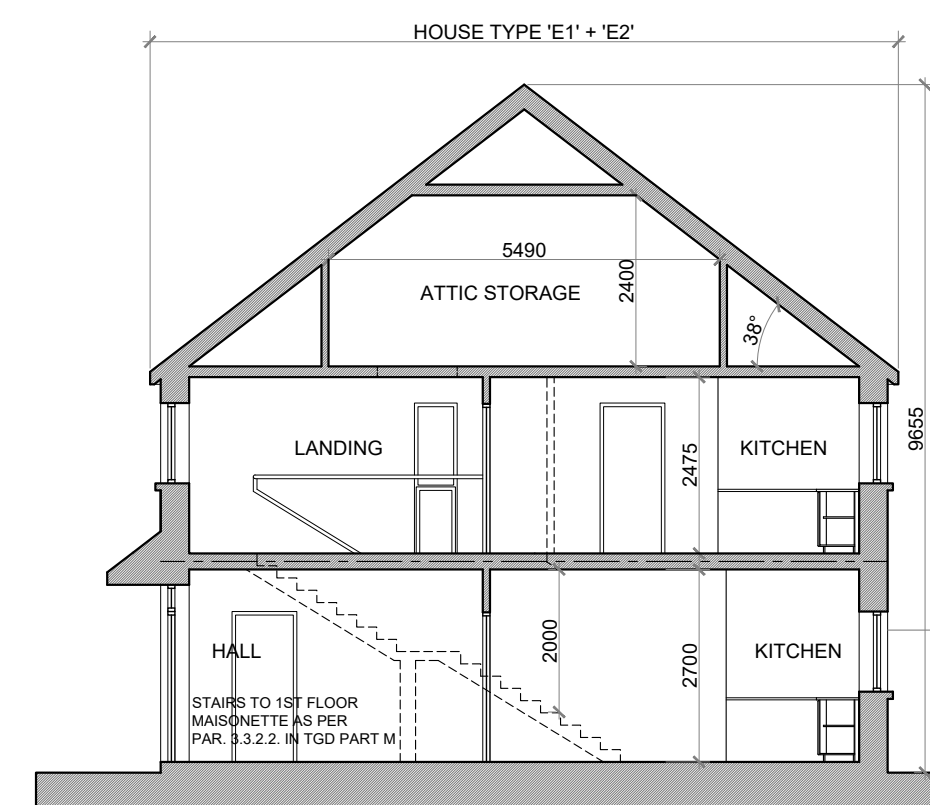
FIRST FLOOR PLAN @ 1:100
TYPES 'E2' + 'B1'



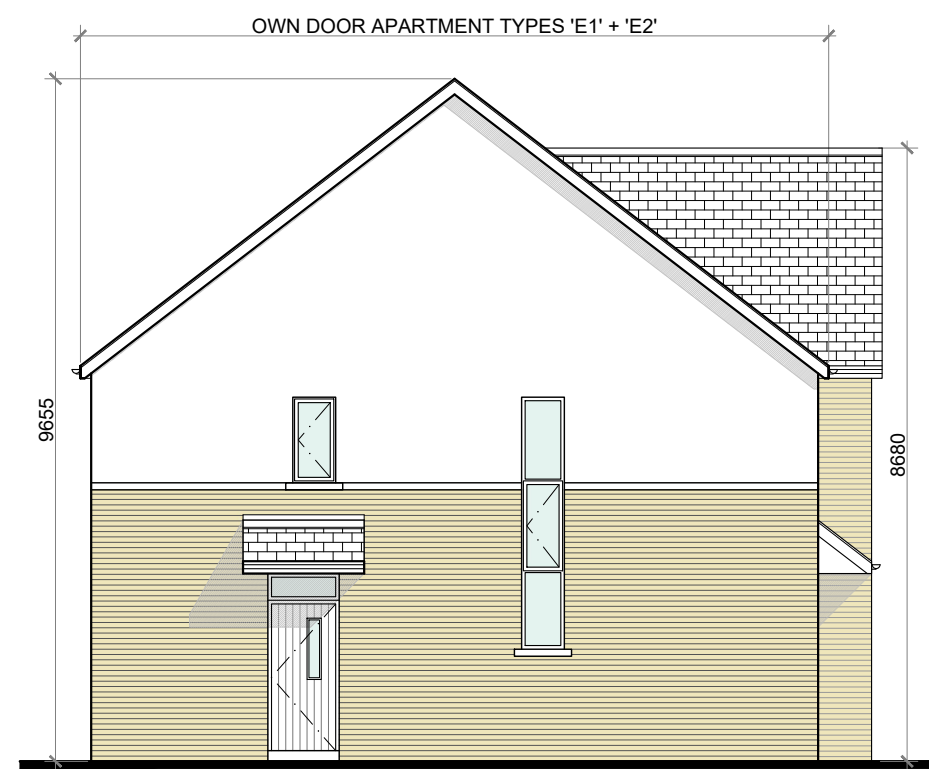
FRONT ELEVATION @ 1:100
TYPES 'E1' + 'E2' + 'B1'



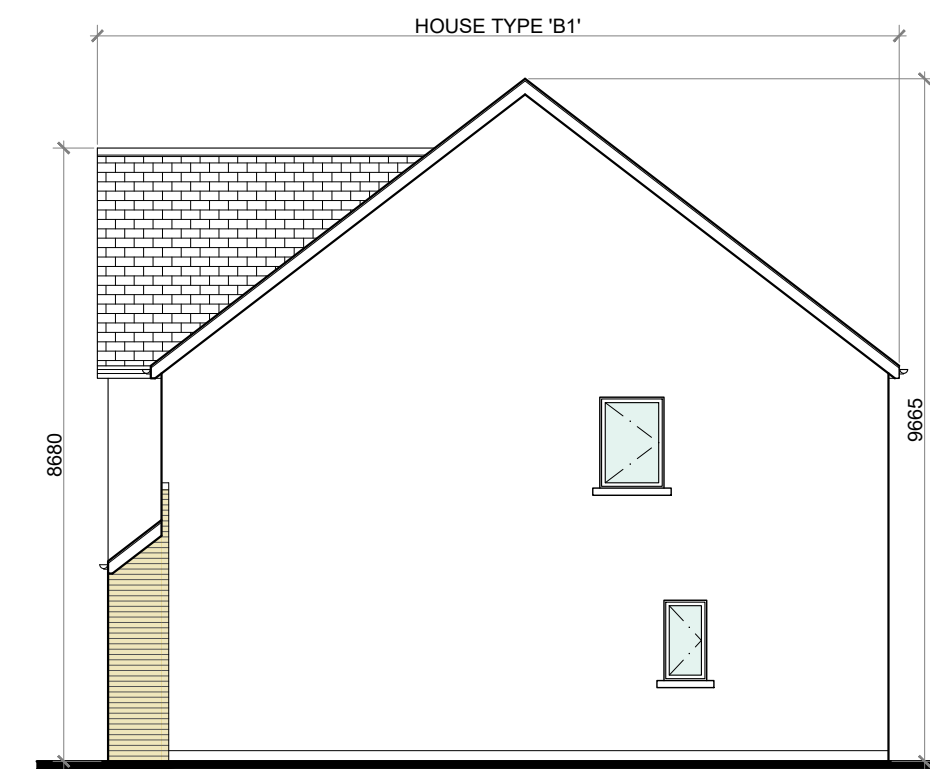
REAR ELEVATION @ 1:100
TYPES 'E1' + 'E2' + 'B1'



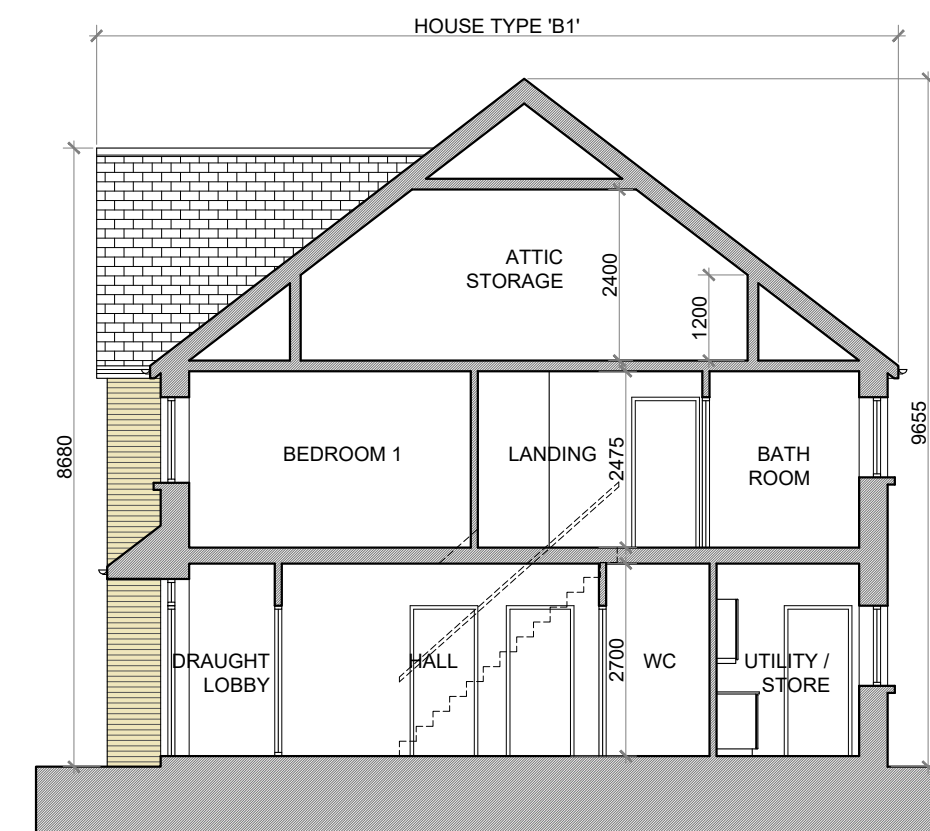
SECTION A-A @ 1:100
TYPES 'E1' + 'E2'



SIDE ELEVATION (DUAL FRONTAGE) @ 1:100
TYPES 'E1' + 'E2'



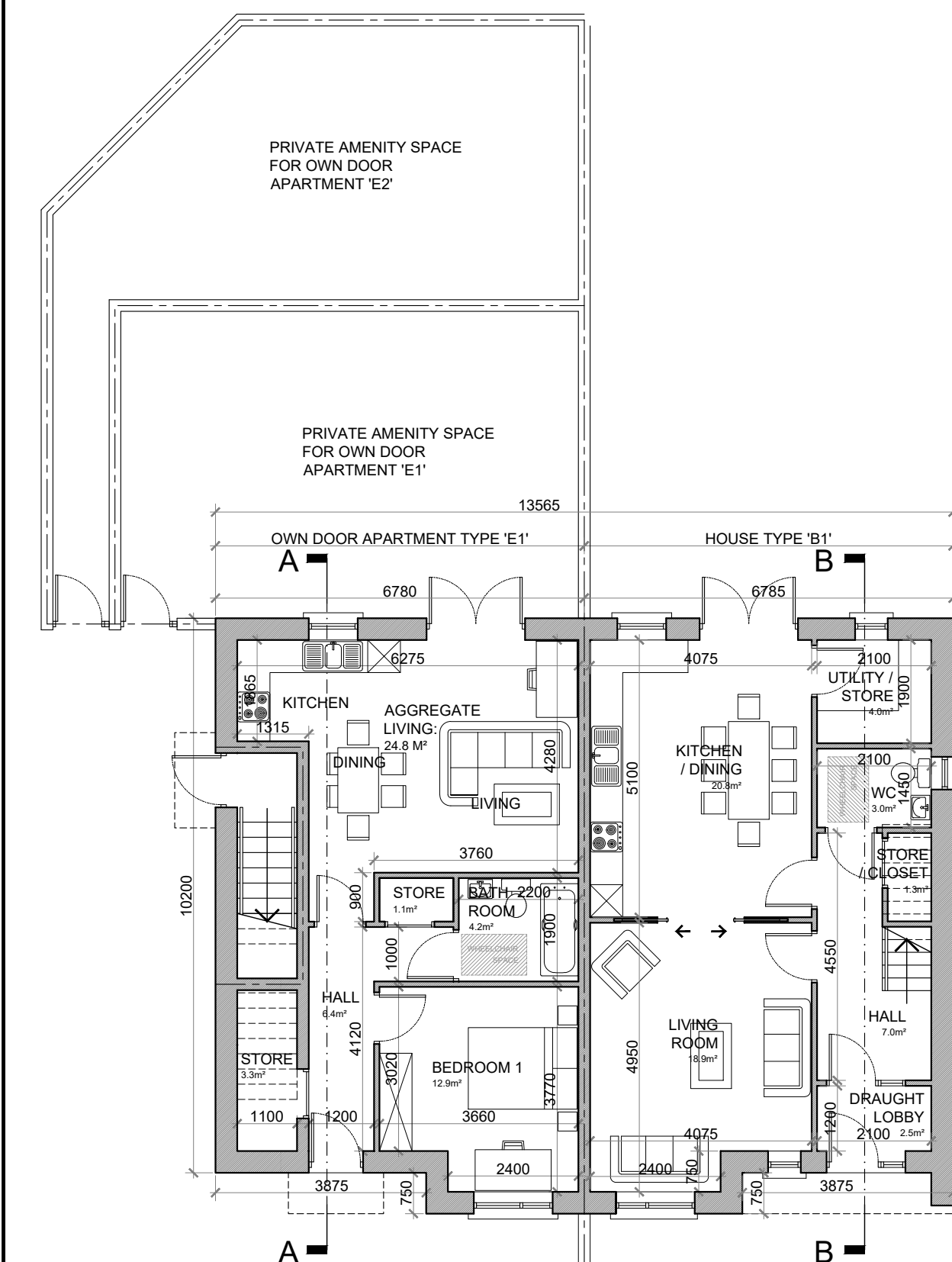
SIDE ELEVATION @ 1:100
TYPE 'B1'



SECTION B-B @ 1:100
TYPE 'B1'

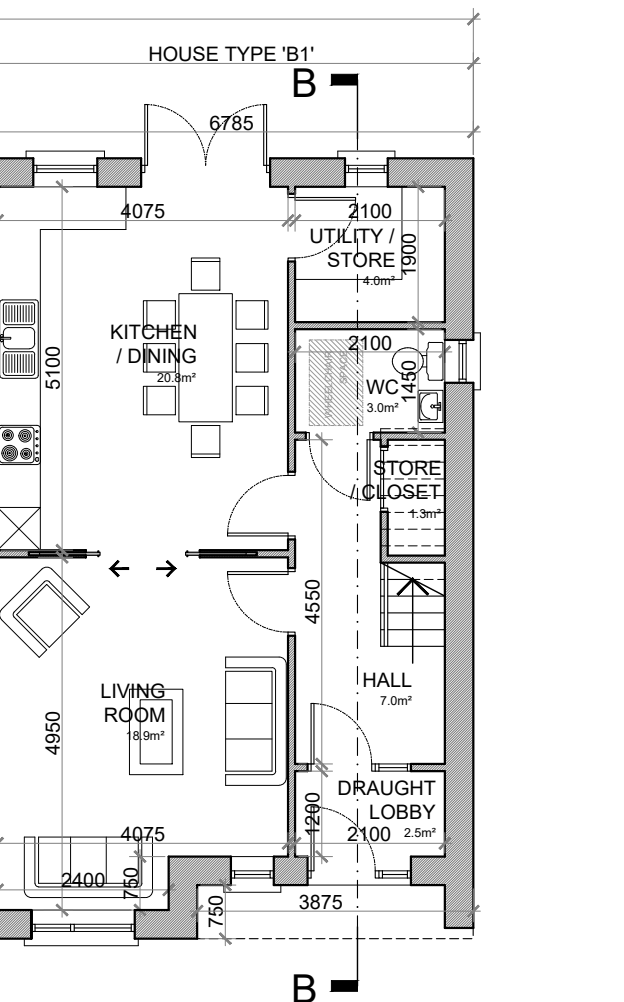
PROPOSED FINISHES:

- SLATE / TILED FINISH TO ROOF.
- UPVC / ALUMINIUM FINISH TO FASCIA, GUTTERS AND DOWNPIPES.
- SELECTED BRICK FINISH TO AREAS AS INDICATED.
- PLASTER / RENDER FINISH TO WALLS AS INDICATED.
- UPVC / ALUMINIUM / TIMBER FINISH TO WINDOWS AND DOORS.
- PAINTED CONCRETE / STONE SILLS AND CAPPINGS.
- PLASTER / RENDER FINISH TO PLINTH.



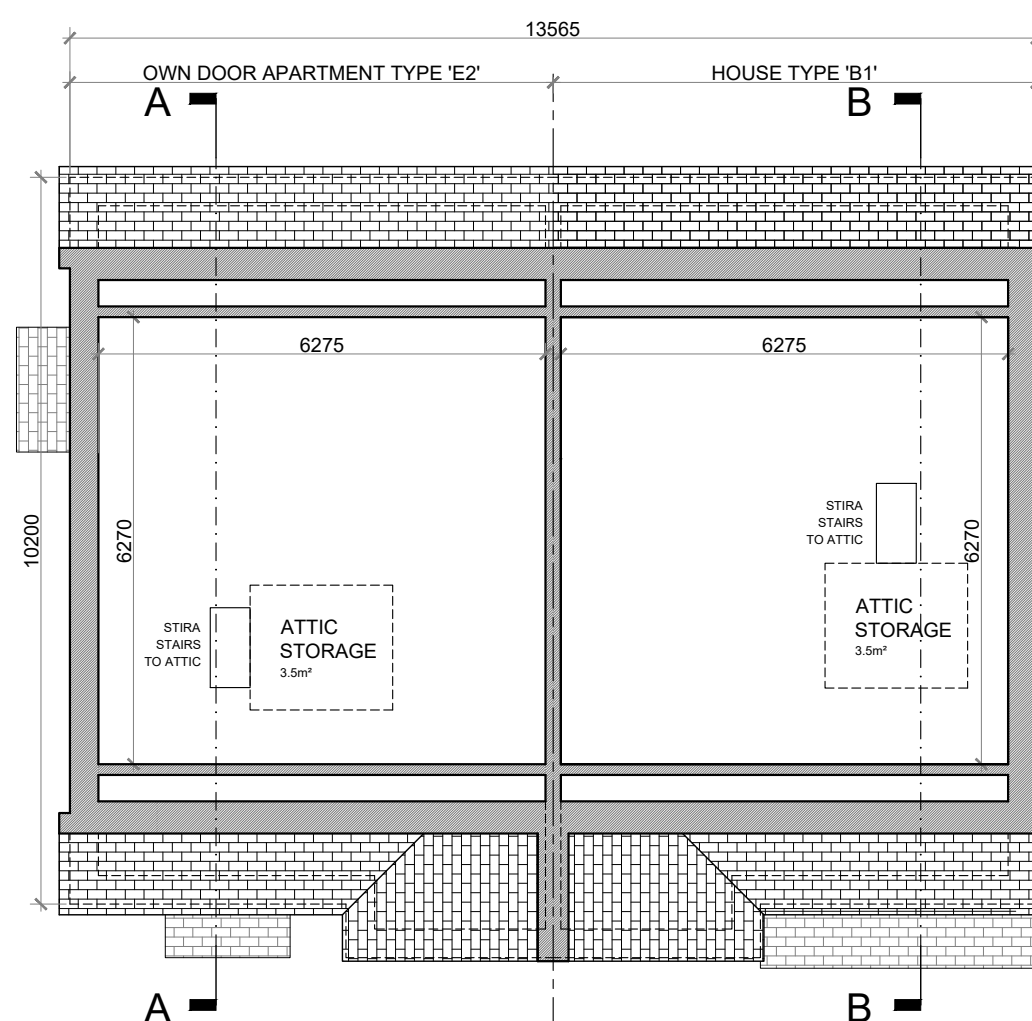
GROUND FLOOR PLAN @ 1:100
TYPES 'E1'

'E1' FLOOR AREA: 55 SQ.M. (592.0 SQ.FT.)
'E2' FLOOR AREA: 65.3 SQ.M. (703.0 SQ.FT.)
GROUND FLOOR AREA: 60.8 SQ.M. (654.5 SQ.FT.)
FIRST FLOOR AREA: 60.8 SQ.M. (654.5 SQ.FT.)
TOTAL FLOOR AREA: 121.6 SQ.M. (1309.0 SQ.FT.)



GROUND FLOOR PLAN @ 1:100
TYPES 'B1'

GROUND FLOOR AREA: 60.8 SQ.M. (654.5 SQ.FT.)
FIRST FLOOR AREA: 60.8 SQ.M. (654.5 SQ.FT.)
TOTAL FLOOR AREA: 121.6 SQ.M. (1309.0 SQ.FT.)



ATTIC STORAGE PLAN @ 1:100
TYPES 'E2' + 'B1'

HOUSE TYPE 'B1'

3 BED SEMI-DETACHED—6 PERSON

FLOOR AREA / ROOM WIDTH REQUIREMENTS*:			
AREAS:			
MAIN LIVING ROOM	PROVIDED: 18.9 M ²	MIN. REQUIRED: 15 M ²	
BEDROOM 1	11.4 M ²	11.4 M ²	
BEDROOM 2	14.1 M ²	11.4 M ²	
BEDROOM 3 (MAIN)	15.4 M ²	13 M ²	
AGGREGATE LIVING	39.7 M ²	37 M ²	
AGGREGATE BEDROOM	40.2 M ²	36 M ²	
GROSS STORAGE	10.7 M ²	6 M ² (NCC 9 M ²)	
GROSS FLOOR SPACE	121.6 M ²	100 M ² (NCC 100 M ²)	

WIDTHS:			
LIVING ROOM	PROVIDED: 4.075 M	MIN. REQUIRED: 3.8 M	
BEDROOM 1 (DOUBLE)	2.9 M	2.8 M	
BEDROOM 2 (DOUBLE)	3.15 M	2.8 M	
BEDROOM 3 (DOUBLE)	3.375 M	2.8 M	

*FIGURES TAKEN FROM *QUALITY HOUSING FOR SUSTAINABLE COMMUNITIES* PUBLISHED BY THE DóEHLG.

HOUSE TYPE 'E1'

1 BED OWN DOOR APARTMENT—2 PERSON

FLOOR AREA / ROOM WIDTH REQUIREMENTS*:			
AREAS:			
BEDROOM 1 (MAIN)	PROVIDED: 12.9 M ²	MIN. REQUIRED: 11.4 M ²	
AGGREGATE LIVING	24.9 M ²	23 M ²	
AGGREGATE BEDROOM	12.9 M ²	11.4 M ²	
GROSS STORAGE	4.4 M ²	3 M ²	
GROSS FLOOR SPACE	55 M ²	45 M ²	

WIDTHS:			
LIVING / DINING ROOM	PROVIDED: 4.28 M	MIN. REQUIRED: 3.3 M	
BEDROOM 1 (DOUBLE)	3.02 M	2.8 M	

*FIGURES TAKEN FROM *QUALITY HOUSING FOR SUSTAINABLE COMMUNITIES* PUBLISHED BY THE DóEHLG FOR 1 BED / 2P APARTMENT.

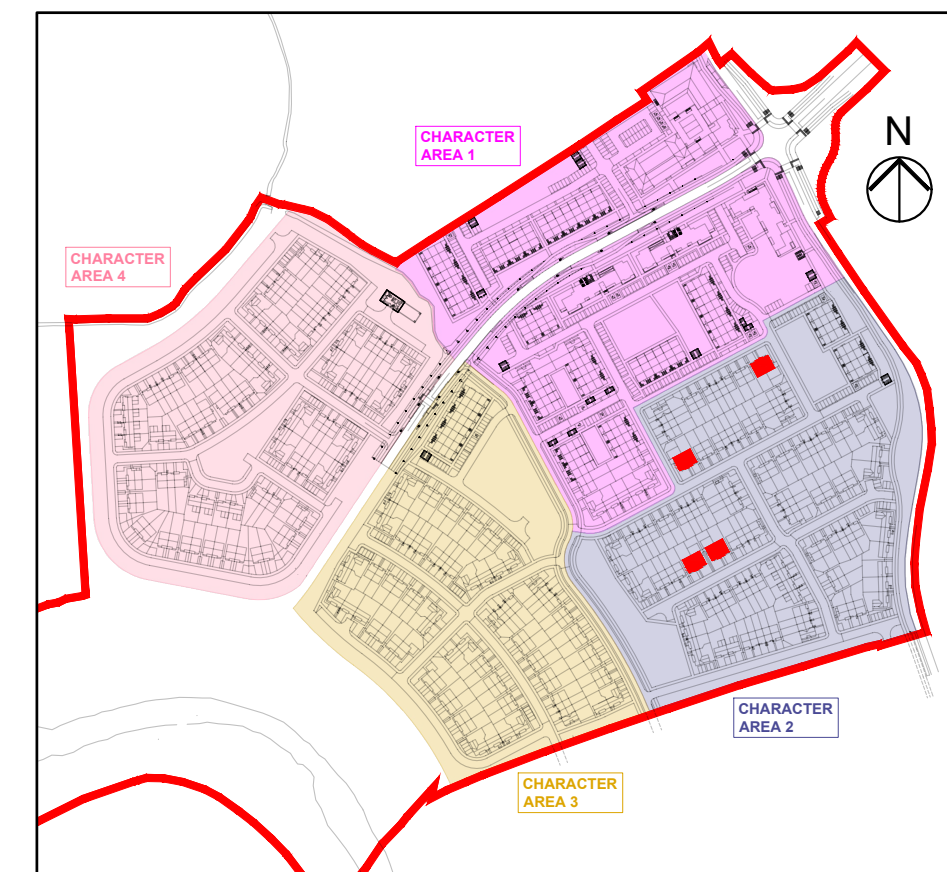
HOUSE TYPE 'E2'

1 BED OWN DOOR APARTMENT—2 PERSON

FLOOR AREA / ROOM WIDTH REQUIREMENTS*:			
AREAS:			
BEDROOM 1 (MAIN)	PROVIDED: 12.9 M ²	MIN. REQUIRED: 11.4 M ²	
AGGREGATE LIVING	24.9 M ²	23 M ²	
AGGREGATE BEDROOM	12.9 M ²	11.4 M ²	
GROSS STORAGE	7 M ²	3 M ²	
GROSS FLOOR SPACE	65.3 M ²	45 M ²	

WIDTHS:			
LIVING / DINING ROOM	PROVIDED: 4.28 M	MIN. REQUIRED: 3.3 M	
BEDROOM 1 (DOUBLE)	3.02 M	2.8 M	

FIGURES TAKEN FROM *QUALITY HOUSING FOR SUSTAINABLE COMMUNITIES* PUBLISHED BY THE DóEHLG FOR 1 BED / 2P APARTMENT.



KEY PLAN

SEMI-DETACHED HOUSE TYPE B1 + OWN DOOR APARTMENTS E1 + E2—CHARACTER AREA 2

NOTES:

DO NOT SCALE. USE ONLY FIGURED DIMENSIONS WHICH SHOULD BE CHECKED ON SITE BEFORE WORK COMMENCES.

ALL WORK TO BE CARRIED OUT IN ACCORDANCE WITH THE LATEST BUILDING REGULATIONS.

REFER TO STRUCTURAL ENGINEER'S DRAWINGS AND SPECIFICATION FOR ALL STRUCTURAL WORK.

THIS DRAWING IS COPYRIGHT.

NO.:	REVISIONS:	DATE:	H	DATE:
A			I	
B			J	
C			K	
D			L	
E			M	
F			N	
G			O	

LEGEND:

REFER TO THE SITE LAYOUT DRAWING FOR THE ORIENTATION AND FLOOR LEVELS FOR EACH DWELLING.

OFA

O'LYNN ARCHITECTS,
LOWER DYRE STREET,
NEWBRIDGE,
CO. KILDARE.
TEL: 045 433400
EMAIL: info@ofymarchitects.ie
WEB: www.ofymarchitects.ie



PROJECT: PROPOSED GREAT CONNELL SHD AT NEWBRIDGE, CO. KILDARE.

TITLE: PROPOSED PLANS, ELEVATIONS & SECTION FOR SEMI-DETACHED HOUSE TYPE B1 & DUAL ELEVATION OWN DOOR APARTMENTS E1 & E2—CHARACTER AREA 2

CLIENT: ASTON LTD.

STAGE: PLANNING

PROJECT NO.: 19070

DRG. NO.: PA-036

SCALE: 1:100
DATE: MARCH 2022

DRAWN: POF
CHECKED: POF